

ASHTON

Village News

Issue 1

June 1992

Welcome to the first issue of **ASHTON VILLAGE NEWS**. It is hoped that we can produce a regular **FREE** copy of the Newsletter to every household in the village.

We intend to produce a new issue of Ashton Village News every two months. However it relies on the contributions from members of Ashton Parish, no matter what age. If you have any contribution or comment to make we would be pleased to hear from you.

We hope to make Ashton Village News financially self supporting by having small advertisements and by finding a **SPONSOR** for each issue. To produce enough copies we need to find £15 each issue, so if you would like to place a village advertisement to reach almost 150 households, or like to sponsor all or part of an issue please contact me.

A.V.N. EDITOR - DAVE FARRAND, 20 HARTWELL ROAD, ASHTON. Telephone 863225

ASHTON PARISH COUNCIL A.G.M.

The Ashton Parish Council AGM was held on Monday 13 April. The turn out was one of the best for many years.

Points discussed were :

- * The Proposed idea for 60 new houses.
- * The appointment of a Parish Tree Warden.
- * The appointment of a Parish Footpath Warden.

These are reported elsewhere in the Newsletter.

Further points noted were:

- * Waste Skips to be supplied on the Hartwell Road and Stoke Road 'Village Greens' over Bank Holidays for the disposal of bulky waste.
- * The poor condition of Village paths after the Gas installation and the poor condition of some parts of Parish roads.
- * The relocation of the Village seat (after

a vote) to the Stoke Road Village Green.

- * The condition of waste water and sewage pipes in some parts of the village.
- * The addition of new street lights in some of the darker parts of the village.

Mrs Coles, the District Secretary and Solicitor to the District Council gave a presentation of her work in the Council and of the work the South Northamptonshire Council (S.N.C.) does for the members of Ashton Parish. The S.N.C. are trying to become even more approachable to members of the public and to that end Mrs Coles is to be the S.N.C. representative for Ashton Parish. If you find that you are not getting the help from S.N.C. that you feel you need, then either telephone or write to S.N.C. asking for Mrs Coles, the Ashton Parish representative.

This issue kindly sponsored by KEN ANSDELL

A NEW HOUSING DEVELOPMENT IN ASHTON?



© Crown copyright

During the course of the Ashton Parish Council AGM on the 13 April 92 it was confirmed that details of a proposed new housing development in Ashton had been shown to the Parish Council.

The Chairman confirmed that members of the Parish Council had been given a presentation of the proposed housing development in Ashton by representatives of the Sunley company which owns Vale Farm. It was suggested that over 60 new houses and possibly a new village school may be built on the site of Vale Farm, shown to the south of the village on the shaded part of the sketch map. The Farm and its surrounding buildings would be demolished and the farming operation be relocated at Ashton Lodge Farm on the Roade/Hartwell road.

As a map of the development layout is not available, we have only been able to show the approximate location of the development as remembered by members of the Parish Council. The Chairman asked for the presentation to be repeated at the AGM, but unfortunately this was not possible.

We understand the Parish Council are attempting to obtain more information on this proposed development.

FOOTPATH WARDEN

For years, many of the Ashton Parish footpaths and bridleways have been used infrequently because they have become overgrown. Footpaths in adjacent parishes have been kept in good condition, due to the efforts of their Footpath Wardens. Hartwell Parish has some excellent footpaths which are well maintained and well walked.

Ashton now has its own Footpath Wardens who have recently been appointed by the Parish Council. A survey has been carried out on all the Parish footpaths, which shows that much work needs to be done to put things right.

In future issues we will keep you informed on Ashton Parish footpath clearance.

TREE WARDEN

Northamptonshire has been picked out as having the worst record for tree conservation in the country. It has been suggested that over 68% of the county's ancient forest has been destroyed in the last 50 years. This is a faster rate than the Amazon rainforest (10% felled). In 1942 the county had 18,000 acres of ancient woodland, today there are only 5,600 acres left.

In line with many other parts of the country Ashton is to carry out its own Tree Survey. Although there are many fine old trees still remaining in the Parish, very few of them are recorded. A detailed survey of all trees in the Parish is to start shortly. It is expected that a full survey of the whole Parish may take two years.

OLD ASHTON

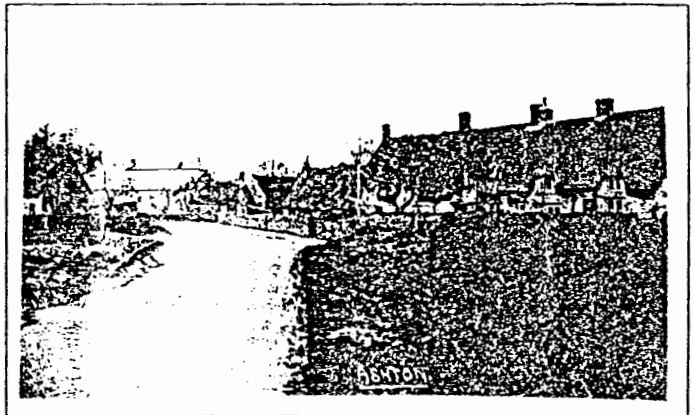
The name of ASHTON has been spelt many different ways over the years.

During the Saxon era the Ash tree was held in veneration and it has been suggested that the village may have originated during these times. The Domesday book records it as ASCE or ACESHILLE. Very early records show that the village had been known as ESSE, ESSENE or ESSTON.

Some of the church tombs record it as ASHENE or ASTON. During the mid 1800's Ashton was known as ASHLEY and ASHNEY changing to ASHEN or AYSHEN by 1890.

We would like to include a regular feature on 'OLD ASHTON' so any contributions with interesting facts, photographs etc would be most welcome.

The photograph on the right shows a row of cottages in Hartwell Road. The cottages were demolished in the 1920s to make way for council houses. The Old Crown Inn (with a pale roof) can be seen in the distance. On the left there is still a water pump on the green at the entrance to Vale Farm.



LETTERS

We would like to have a regular letters section. If you have anything you would like the rest of the village to know about or have suggestions about improving life in Ashton,

then please WRITE to :

Ashton Village News

CONTACTS in ASHTON

Listed below are contact points that may be useful

PARISH COUNCIL :

CHAIRMAN	Tim Davies	862904
SECRETARY	Veneeta Webb	
MEMBER	Derek Hay	862374
MEMBER	Maurice Foster	
MEMBER	Bernard Day	862383
MEMBER	Anne Beasley	863324

WARDENS :

FOOTPATH	Delia Farrand	863225
TREE	David Farrand	863225
ASSISTANT	Kevin Palmer	862464
ASSISTANT	Ken Ansdell	863426

CHURCH :

CANON	C.H. Davidson	862284
WARDEN	Brian Nevison	862716

SCHOOL :

PARENTS ASN	Sandra Notley	863172
GOVERNORS	Alan Sharp	862360

S.N.C. ASHTON REPRESENTATIVE -

Mrs Coles (0327) 50211

ASHTON ADS

WANTED Do you need help or advice? Your garden maintained? Your house repaired? Your car serviced by someone local? -- then place a **WANTED ASHTON AD**

FOR SALE Do you have anything to sell? Can you help others out with your skills -- then place a **FOR SALE ASHTON AD.**

There is no fixed price for placing an advertisement. However a small donation would be appreciated as this would help towards the production costs of the next issue.

CRYSTAL CLEAR CLEANING SERVICES

Office and Window Cleaning
 Regular, Reliable Service
 For a Free No Obligation Quote
 Ring Carl De Boer on 862915

ELECTRICIAN

For all household electrical tasks
 No job too small
 Phone John O'Meara evenings
 on 862078

HY VAN CHINESE HOT FOOD

MOBILE TAKE AWAY
 Wednesday to Saturday
 6.30 to 11.30
 Lay By Outside Barclays Bank
 Ashton Road, Roade